

Affinity™



Hydroactive Impression Material



Affinity™ Hydroactive Impression Material is clinically proven to provide consistently accurate impressions utilizing superior 3rd generation chemistry, technique-designed viscosities, as well as doctor and patient-friendly work and set times.

Superior Chemistry

Affinity's chemistry combines a unique branched resin, more refined filler, and an even distribution of surfactant. These three components give Affinity several distinct advantages over other impression materials.

Ultra High Tear Strength

Regardless of the viscosity, Affinity's branched resin produces three-dimensional cross-linking which results in extremely high tear strength, this ensures you won't experience tearing upon removal of the impression.

Technique-Designed Viscosities

Affinity goes beyond offering light body, medium body and heavy body viscosities. All Affinity viscosities are designed to maximize accuracy and to prevent common clinical challenges. Affinity offers three unique light bodies, each designed with specific technique preferences in mind. Affinity tray materials flow better than other tray materials, and are designed to prevent over-displacement of the light body, to ensure you capture impression accuracy of less than 2 microns. You'll also notice a seamless blend between the light body and Affinity tray materials in every impression. Use Affinity Heavy Body for full-arch impressions and Affinity InFlex for the dual-arch impression technique.

Doctor/Patient-Friendly Work & Set Times

Dentists will benefit from Affinity's long working time, allowing you to syringe around multiple preparations. Patients will appreciate Affinity's heat activated, quick intraoral set time which minimizes the time the impression stays in the mouth.

“Technique Designed” Working & Set Times at a Glance

Working and Set Times	Affinity Viscosity	Light Body HF (High Flow)		Light Body RF (Regular Flow)		Light Body XL (Xtra Light Flow)	Monophase	Heavy Body		Inflex Maximum Support Tray Material		Quick Bite	Affinity Crystal	Putty
	Available Working Time	Regular Set	Fast Set	Regular Set	Fast Set			Regular Set	Fast Set	Regular Set	Fast Set			
		1:45 min.	1:10 min.	1:45 min.	1:10 min.	1:45 min.	2:15 min.	1:45 min.	1:10 min.	1:45 min.	1:10 min.	0:15 min.	0:45 min.	1:45 min.***
	Minimum Intraoral Set Time	2:30 min.*	1:45 min.**	2:30 min.*	1:45 min.**	2:30 min.*	2:45 min.	2:30 min.*	1:45 min.**	2:30 min.*	1:45 min.**	0:45 min.	1:30 min.	3:15 min.
	Maximum Total Cure Time from Start of Mix	4:15 min.	2:55 min.	4:15 min.	2:55 min.	4:15 min.	5:00 min.	4:15 min.	2:55 min.	4:15 min.	2:55 min.	1:00 min.	2:15 min.	5:00 min.

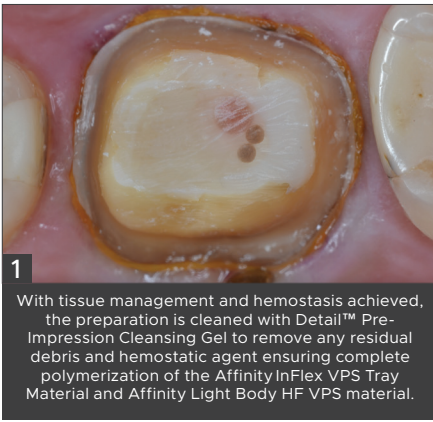
*2:30 min. reflects the minimum intraoral set time. Our recommendation is to allow 3:00 min. for a full intraoral set.

**1:45 min. reflects the minimum intraoral set time. Our recommendation is 2:00 min. for full intraoral set.

***Available working time for Putty is in addition to a 0:30-0:45 second mix time. These procedure times reflect ideal conditions. Fluctuations in temperature and humidity may reduce or extend these times.

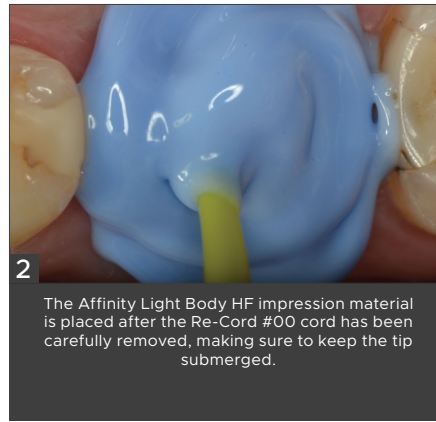
DUAL-ARCH IMPRESSION USING QUAD-TRAY XTREME

Dentistry courtesy of Brad Carson, DDS. Photography courtesy of Gildo Santos, DDS.



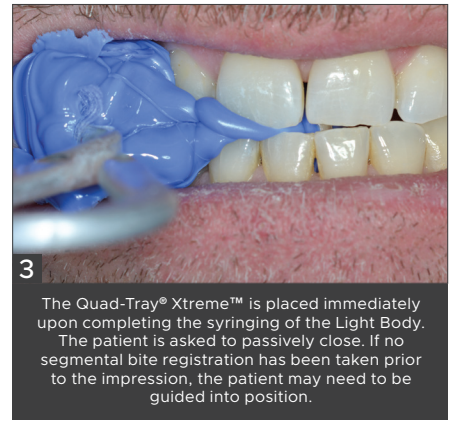
1

With tissue management and hemostasis achieved, the preparation is cleaned with Detail™ Pre-Impression Cleansing Gel to remove any residual debris and hemostatic agent ensuring complete polymerization of the Affinity InFlex VPS Tray Material and Affinity Light Body HF VPS material.



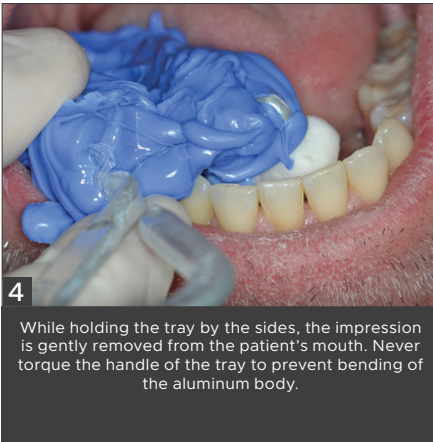
2

The Affinity Light Body HF impression material is placed after the Re-Cord #00 cord has been carefully removed, making sure to keep the tip submerged.



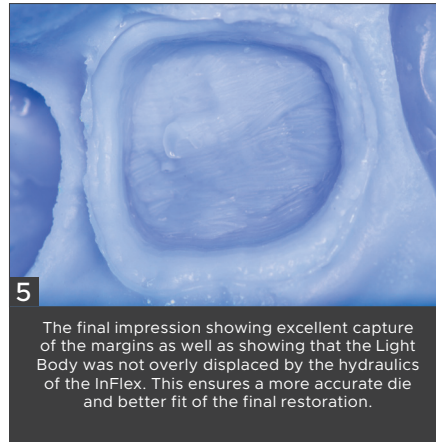
3

The Quad-Tray® Xtreme™ is placed immediately upon completing the syringing of the Light Body. The patient is asked to passively close. If no segmental bite registration has been taken prior to the impression, the patient may need to be guided into position.



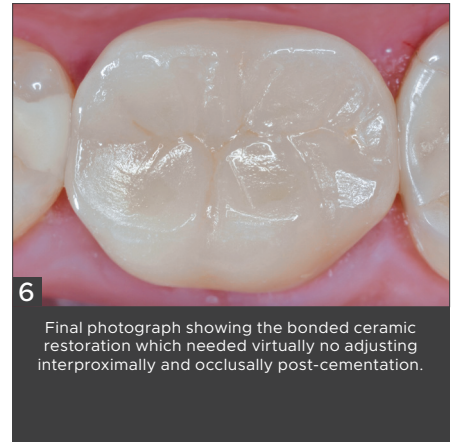
4

While holding the tray by the sides, the impression is gently removed from the patient's mouth. Never torque the handle of the tray to prevent bending of the aluminum body.



5

The final impression showing excellent capture of the margins as well as showing that the Light Body was not overly displaced by the hydraulics of the InFlex. This ensures a more accurate die and better fit of the final restoration.



6

Final photograph showing the bonded ceramic restoration which needed virtually no adjusting interproximally and occlusally post-cementation.



SPECTRUM 2-PACK CUSTOMIZABLE BULK KITS

Mix and match viscosities in multiples of 2 to create your own unique Spectrum Pack of 12, 18, and 36.*

* Excluding Putty and AFFINITY Crystal. Mixing tips not included.



AFFINITY SPECTRUM 50ML 2-PACKS

Contains: 2 x 50mL cartridges, instructions/SDS
*Mixing tips not included

LIGHT BODY HF (High Flow)
Regular Set (024420W)
Fast Set (024425W)

LIGHT BODY RF (Regular Flow)
Regular Set (024410W)
Fast Set (024415W)

LIGHT BODY XL (024426W)

MONOPHASE (025400W)

INFLEX
Regular Set (022400W)
Fast Set (022405W)

HEAVY BODY
Regular Set (023400W)
Fast Set (023405W)

QUICK BITE (026400W)

AFFINITY 50ML 2-PACKS

Contains: 2 x 50mL cartridges, mixing tips, instructions/SDS

AFFINITY CRYSTAL (021400)

LIGHT BODY HF (High Flow)
Regular Set (024420)
Fast Set (024425)

LIGHT BODY RF (Regular Flow)
Regular Set (024410)
Fast Set (024415)

LIGHT BODY XL (024426)

MONOPHASE (025400)

INFLEX
Regular Set (022400)
Fast Set (022405)

HEAVY BODY
Regular Set (023400)
Fast Set (023405)

QUICK BITE (026400)

AFFINITY 50ML 6-PACK

Contains: 6 x 50mL cartridges, instructions/SDS *Mixing tips not included

AFFINITY CRYSTAL (019916)

AFFINITY 50ML 12-PACK

Contains: 12 x 50mL cartridges, instructions/SDS *Mixing tips not included

AFFINITY CRYSTAL (010912)

LIGHT BODY HF (High Flow)
Regular Set (019522)
Fast Set (019525)

LIGHT BODY RF (Regular Flow)
Regular Set (019510)
Fast Set (019515)

LIGHT BODY XL (019526)

MONOPHASE (019540)

INFLEX
Regular Set (012912)
Fast Set (012952)

HEAVY BODY
Regular Set (013912)
Fast Set (013952)

QUICK BITE (016912)

DUAL PORT IMPRESSION GUN (031120)

AFFINITY PUTTY (027200)

Contains: 1 x 305mL jar catalyst,
1 x 205mL jar base,
2 scoops, instructions/SDS

AFFINITY 120ML 2-PACKS

Contains: 2 x 120mL cartridges,
6 dynamic mixing tips, instructions/SDS

INFLEX
Regular Set (022401)
Fast Set (022406)

HEAVY BODY
Regular Set (023401)
Fast Set (023406)

AFFINITY MEGAMIX CARTRIDGES

Contains: 1 x 380mL cartridges,
instructions/SDS

INFLEX
Regular Set (012381)
Fast Set (012386)

HEAVY BODY
Regular Set (013381)
Fast Set (013386)

To view the latest news, education and more, visit:

www.clinicianschoice.com



Clinician's Choice®
Designed for better dentistry.